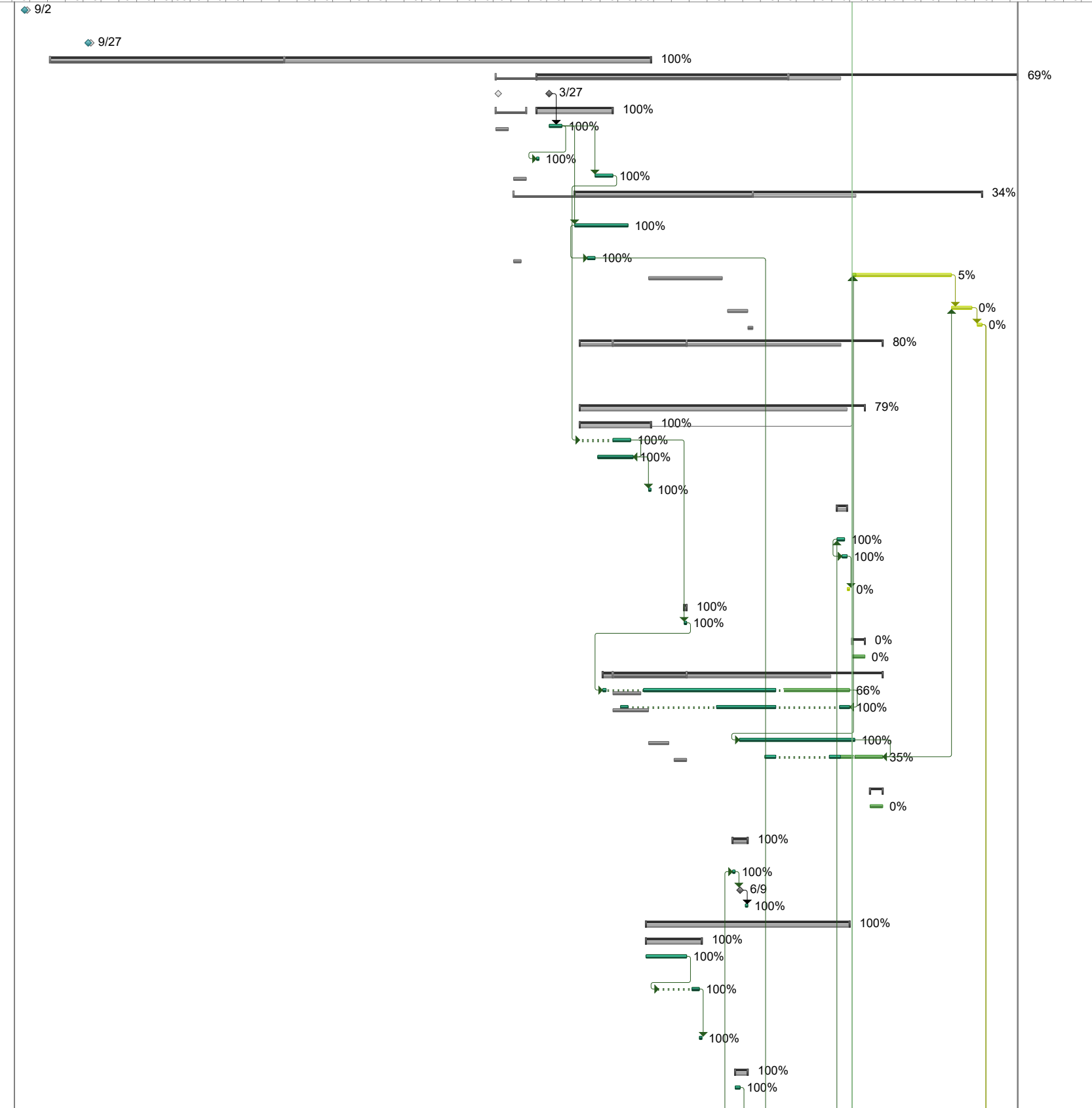


ID	Task Mode	Task Name	Duration	Start	Finish	% Complete	% Work Complete	Predecessors	Sep '22	Oct '22	Nov '22	Dec '22	Jan '23	Feb '23	Mar '23	Apr '23	May '23	Jun '23	Jul '23	Aug '23	Sep '23	Oct '23																																			
									21	28	4	11	18	25	2	9	16	23	30	6	13	20	27	4	11	18	25	1	8	15	22	29	5	12	19	26	2	9	16	23	30	7	14	21	28	4	11	18	25	2	9	16	23	30	6	13	20
1	✓	Notification of Award	0 days	Fri 9/2/22	Fri 9/2/22	100%	100%		9/2																																																
2	✓	Purchase Order Received	0 days	Tue 9/27/22	Tue 9/27/22	100%	100%		9/27																																																
3	✓	2022 Activities	164 days	Mon 9/12/22	Fri 5/5/23	100%	100%																																																		
36	✓	2023 Activities	134 days	Wed 3/22/23	Tue 9/26/23	69%	0%																																																		
37	✓	2023 Activities Start	0 days	Mon 3/27/23	Mon 3/27/23	100%	100%																																																		
38	✓	Mobilization and Site Prep	21 days	Wed 3/22/23	Thu 4/20/23	100%	100%																																																		
39	✓	Mob of Personnel & Equipment 2023	5 days	Mon 3/27/23	Fri 3/31/23	100%	100%	37																																																	
40	✓	Pre-Construction Meeting	1 day	Wed 3/22/23	Wed 3/22/23	100%	100%	39																																																	
41	✓	Install Erosion & Sediment Controls	5 days	Fri 4/14/23	Thu 4/20/23	100%	100%	39																																																	
42	✓	OU1 IB-4A Residue Placement Area Construction and Cover System	113 days	Thu 4/6/23	Tue 9/12/23	34%	0%																																																		
43	✓	Finalize construction of 4A Berms using existing on-site material	14 days	Thu 4/6/23	Wed 4/26/23	100%	100%	39																																																	
44	✓	Prep Area to Received Waste - 4A	3 days	Tue 4/11/23	Thu 4/13/23	100%	100%	43SS+2 days																																																	
45	✓	Import and Place Clean Soil Cover - 4A	29 days	Mon 7/24/23	Thu 8/31/23	5%	5%	64,105,50																																																	
46	✓	Place Erosion Control Blanket - 4A	6 days	Fri 9/1/23	Fri 9/8/23	0%	0%	45,66																																																	
47	✓	Revegetate - 4A	2 days	Mon 9/11/23	Tue 9/12/23	0%	0%	46																																																	
48	✓	Industrial/Commercial Areas (IB-4C, 4E) Remediation, Backfill, and Restoration & Remaining 3B/6A Remediation	85 days	Sat 4/8/23	Fri 8/4/23	80%	0%																																																		
49	✓	Area 3B/6A	80 days	Sat 4/8/23	Fri 7/28/23	79%	0%																																																		
50	✓	Additional Excavation Area 3B	20 days	Sat 4/8/23	Fri 5/5/23	100%	100%																																																		
51	✓	Excavate - 3B	5 days	Sat 4/8/23	Thu 4/27/23	100%	100%	41																																																	
52	✓	Import and Place Clean Backfill - 3B	10 days	Sat 4/15/23	Fri 4/28/23	100%	100%	51FF+3 days																																																	
53	✓	Revegetate - 3B	1 day	Fri 5/5/23	Fri 5/5/23	100%	100%	52																																																	
54	✓	Additional Excavation Area - 3B Haul Road	4 days	Tue 7/18/23	Fri 7/21/23	83%	0%																																																		
55	✓	Excavate 3B Haul Road	3 days	Tue 7/18/23	Thu 7/20/23	100%	100%	100																																																	
56	✓	Import and Place Clean Backfill - 3B Haul Road	2 days	Thu 7/20/23	Fri 7/21/23	100%	100%	55SS+1 day																																																	
57	✓	Revegetate - 3B Haul Road	1 day	Sat 7/22/23	Sat 7/22/23	0%	0%	56																																																	
58	✓	Additional Excavation Area 6A	1 day	Fri 5/19/23	Fri 5/19/23	100%	100%																																																		
59	✓	Test Pits	1 day	Fri 5/19/23	Fri 5/19/23	100%	100%	51																																																	
60	✓	6A Haul Road>	5 days	Mon 7/24/23	Fri 7/28/23	0%	0%																																																		
61	✓	Excavate/Backfill 6A Haul Road	5 days	Mon 7/24/23	Fri 7/28/23	0%	0%																																																		
62	✓	Areas 4C, 3B-1 & 4E	80 days	Mon 4/17/23	Fri 8/4/23	73%	0%																																																		
63	✓	Excavate - 4C, 3B-1, & 4E	58.05 days	Mon 4/17/23	Sat 7/22/23	66%	73%	59																																																	
64	✓	Import and Place Clean Backfill - 4C, 3B-1, & 4E	24.05 days	Mon 4/24/23	Sat 7/22/23	100%	100%	63FF+1 day																																																	
65	✓	Revegetate - 4C, 3B-1 & 4E	32.05 days	Fri 6/9/23	Mon 7/24/23	100%	100%	64																																																	
66	✓	Place Stone over Backfill - 4E where required	20.45 days	Mon 6/19/23	Fri 8/4/23	35%	35%	65FF																																																	
67	✓	4E-1 Haul Road>	5 days	Mon 7/31/23	Fri 8/4/23	0%	0%																																																		
68	✓	Excavate/Backfill 4E-1 Haul Road	5 days	Mon 7/31/23	Fri 8/4/23	0%	0%																																																		
69	✓	Area 3B-2 Additional Excavation & Backfill	4 days	Wed 6/7/23	Mon 6/12/23	100%	100%																																																		
70	✓	Excavate - 3B-2	1 day	Wed 6/7/23	Wed 6/7/23	100%	100%	100																																																	
71	✓	Place Clean Backfill - 3B-2	0 days	Thu 6/8/23	Fri 6/9/23	100%	100%	70																																																	
72	✓	Revegetate - 3B-2	1 day	Mon 6/12/23	Mon 6/12/23	100%	100%	71																																																	
73	✓	Additional Excavation Area 4E	57 days	Thu 5/4/23	Sat 7/22/23	100%	100%																																																		
74	✓	4E-1 Extension (Hamel)	16 days	Thu 5/4/23	Thu 5/25/23	100%	100%																																																		
75	✓	Excavate - 4E-1 Extension (Hamel)	12 days	Thu 5/4/23	Fri 5/19/23	100%	100%																																																		
76	✓	Import and Place Clean Backfill - 4E-1 Extension (Hamel)	3 days	Tue 5/9/23	Wed 5/24/23	100%	100%	75																																																	
77	✓	Revegetate - 4E-1 Extension (Hamel)	1 day	Thu 5/25/23	Thu 5/25/23	100%	100%	76																																																	
78	✓	4E-1 Extension (OU-1)	3 days	Thu 6/8/23	Mon 6/12/23	100%	100%																																																		
79	✓	Excavate - 4E-1 Extension (OU-1)	2 days	Thu 6/8/23	Fri 6/9/23	100%	100%																																																		



Critical	Task	Manual Task	Duration-only	Baseline Milestone	Summary	External Tasks	Inactive Milestone	Baseline Summary
Critical Split	Split	Start-only	Baseline	Milestone	Manual Summary	External Milestone	Inactive Summary	
Critical Progress	Task Progress	Finish-only	Baseline Split	Summary Progress	Project Summary	Inactive Task	Deadline	

